

CARMA'S CHOICE THIS WEEK



Morrison Homes presents the Rideau II

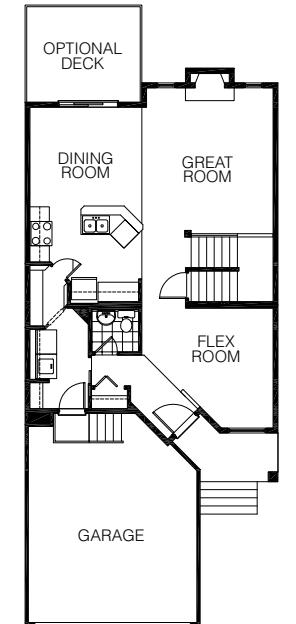
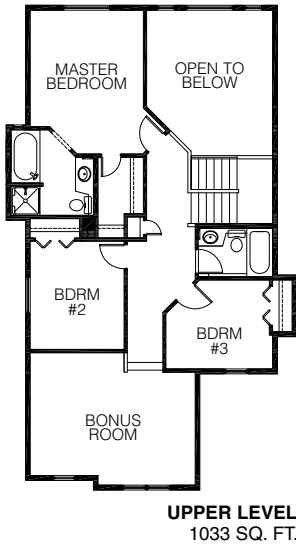
From Morrison Homes, the Rideau II in New Brighton, at 1,918 sq. ft., is Built Green certified — but style and comfort are not sacrificed in the name of green living. It provides greater energy efficiency and reduces pollution, provides healthier indoor air, reduces water usage, preserves natural resources and improves durability and reduces maintenance. Situated at the back of the main floor, the great room boasts soaring two-storey ceilings, a wall of windows and a detailed fireplace. Nearby, in the functional, L-shaped kitchen, an angular, granite-topped island overlooks the great room and roomy breakfast nook, creating an ideal spot for entertaining. Upstairs is a spacious bonus room, two secondary bedrooms, a full bath and master suite, a private spot at the back of the home with a walk-in closet and well-appointed four-piece ensuite. Morrison offers a modern, ecologically minded home with all the traditional comforts. A great way to do your part for the environment.

FEATURES

- Built Green Certified
- Large great room with two-storey ceilings and a wall of windows
- Vaulted bonus room
- Four piece ensuite
- Granite counters & stainless steel appliances

THE COMMUNITY

From the moment you enter the community of New Brighton it will be apparent that no detail was overlooked in the effort to create a beautiful new community with elements reminiscent of the English countryside. New Brighton Central Park is located at the heart of the community and will include several viewpoints that will afford panoramic views of the beautifully manicured 20 acre park and 12 acre Brighton Pond. All 640 acres of New Brighton have been master-planned. As such, residents can be assured that the meticulous attention to detail that New Brighton is built on will be followed through to the end, when New Brighton will be home to over 10,000 people and 3,700 homes. Follow Deerfoot Trail south. Turn left on McKenzie Towne Boulevard SE. Then follow the signs to New Brighton.



THE COST

The *Rideau II* in New Brighton starts from the low \$400,000s including lot and GST.

When 'n' where

THE Rideau II showhome can be viewed at 220 New Brighton Drive SE in Carma's New Brighton. Showhomes are open Monday to Thursday 2 pm to 8 pm, weekends and holidays 12 noon to 5 pm. For further information call Jodi Kellogg at 257-9264.

Carma develops Calgary's best communities. A selection of the finest builders create the homes that complement them. Together we are proud to present this week's choice for outstanding new home quality and value.

www.carma.ca

AA681845

New board directors named to housing group

CHUCK CHIANG
CALGARY HERALD

The local branch of the Canadian Home Builders' Association has announced its board of directors for the upcoming year, effective immediately.

Norm Mross, chief operating officer at Trico Homes, takes over as the 61st president of CHBA-Calgary region, a post that he'll hold until the term ends in July 2009. He succeeds Prominent Homes president Deep Shergill, who held his last general meeting as chapter president last month at the Coast Plaza Hotel.



Norm Mross

Mross and Shergill joins four others on the 2008-2009 executive committee for the local chapter, including first vice president Doug Whitney, who will serve as president of the Calgary region CHBA when Mross's term is completed.

Beattie Homes general manager Brad Cuthbertson (second vice president), Heritage Pointe president Carol Oxtoby (treasurer and secretary) and chapter executive officer Donna Moore round out the execu-

tive committee for the next year.

The local association also elected seven members, starting new two-year terms, to its board of directors: Oxtoby, Canyon Plumbing and Heating president Alex Chupik, Double R Building Products sales and marketing manager Wayne Copeland, Poon McKenzie Architects director of contract administration Don Dessario, Renfrew Insurance vice president Ann Donald, NuVista Homes and Augusta Homes general manager Mike Plumton, and Lenbeth Weeping Tile president Bill Tillapaugh.

They are joined by eight other board members, including Mross, Whitney, Cuthbertson and Shergill, whose current terms end in June 2009. Others in this group include Keystone Excavating president Ken Elias, Burnco Rock Products residential sales supervisor Jamie Kowalski, Bank of Montreal business-to-business area manager Laura Parsons, and Centrex Homes vice president Ralph Smith.

The board, consisting of up to 16 elected voluntary association members, will look at its initiatives for the next year in the upcoming months.

At Shergill's last meeting in June, a provincial CHBA official called for local builders to continue efforts to have the building industry's voice heard at the provincial government level.

Edmonton housing starts plummet

MARTY HOPE
CALGARY HERALD

Despite a moderate increase in multi-family homes, total housing construction starts in Edmonton dropped in May compared to a year ago, says a federal agency.

Starts of all types in the census metropolitan area fell to 586 units, a decline of 48 per cent, says Canada Mortgage and Housing Corp. in a tentative estimate.

"For the year to date, housing starts across the capital region have declined by 42 per cent to 3,584 units, compared with 6,200 units started in the first five months of 2007," says Richard Goatcher of CMHC.

Following an 80-per-cent decline in April from the same month last year, construction starts of single-detached homes dropped by 67 per cent in May to 275 units, down from 836 last year.

For the year-to-date, single-detached home builders across Metro have started 1,110 units, representing a 68-per-cent decline from the same period last year.

"This represents the weakest January-to-May performance since 1996, when only 943

singles were started throughout the region," says Goatcher.

Multiple-family housing units reversed a downward trend, reported in the past three months, with a five-per-cent increase in starts in May compared with the same month last year.

Combined semi-detached, townhouse and apartment starts reached 311 units, up from 296 units.

"A strong improvement in apartment starts helped to counter double-digit per cent declines for semi-detached and townhouse activity," says Goatcher.

Multiple dwelling starts for January to May fell to 2,474 units, an 11-per-cent decline from 2,772 units last year.

Across Alberta, total housing starts in the seven largest urban areas dropped by 28 per cent in May to 2,472 units.

All cities except Red Deer experienced a slowdown when compared with May 2007. Single-detached housing starts fell by 52 per cent to 990 units, with all seven cities recording weaker activity.

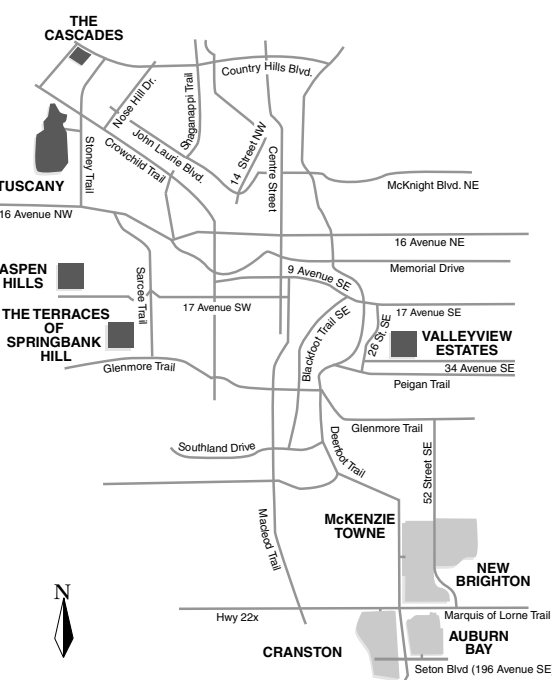
But multiple-family housing starts improved by almost eight per cent to 1,482 units.

Creating communities with passion and integrity for 50 years.

A community is more than just where you live. It's where you thrive. That's why we carefully plan and develop our communities to include more recreational space. You'll find everything from parks and playgrounds to residents' clubs and quaint shopping areas. We also go to great lengths to preserve the natural beauty of our lands. Not to mention, our builders are some of the best in the business. So if you're looking for a new home, visit a Carma community today!



Passion | Integrity | Community



THE TERRACES
of Springbank Hill

www.theterraces-community.com

Presentation Centre Open at
220 Springbluff Heights SW
2-8 PM MON. - THURS.,
NOON-5 PM WEEKENDS AND HOLIDAYS

The final jewel in Springbank Hill, The Terraces is your last chance to enjoy estate living in an established community that's right next door to nature — and conveniently close to shops, schools and services.



www.tuscany-community.com

Showhomes open:
2-8 PM MON. - THURS.,
NOON-5 PM WEEKENDS AND HOLIDAYS

Mountain and downtown views from rolling hills above the Bow River Valley. Walking and cycling paths. A private residents' club, with tennis and basketball courts, a skating pond, and an outdoor hockey rink.



www.aspenhills-community.com

Showhomes open:
NOON-8 PM MON. - FRI.,
NOON-5 PM WEEKENDS AND HOLIDAYS

Natural ravines dotted with native aspen stands. Attractive tree-lined streets with Tudor and Craftsman architecture. Direct access via 17th Avenue to the downtown core and nearby shops and services.



www.valleyviewestates-community.com

Showhomes open:
2-8 PM MON. - THURS.,
NOON-5 PM WEEKENDS AND HOLIDAYS

Located just minutes from downtown, Valleyview Estates sits next to the 40-acre Valleyview Regional Park, and offers stunning city and mountain views, parkside lots, and distinctive architecture. Choose a home with casual charm from a variety of designs.